

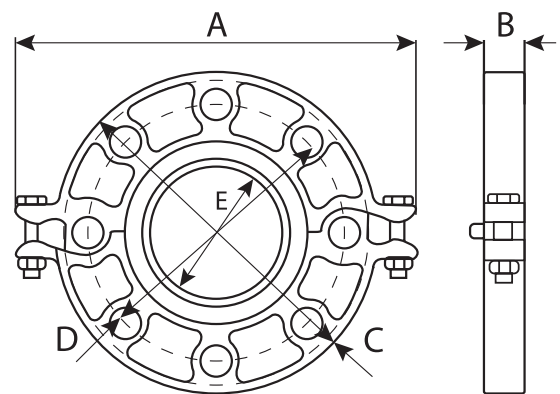
BRIDA RANURADA



Colores Referenciales

- ◆ Material: Fierro Dúctil A536
- ◆ Sistema tipo Victaulic
- ◆ Incorpora directamente componentes embridados PN10 y PN16 a un sistema ranurado
- ◆ Presión para PN10 y PN16
- ◆ ANSI 125/150

* Fotos y medidas referenciales.



| Tamaño mm / in | Tubo O.D mm / in | Presión de Trabajo PSI / MPa | Dimensiones | | | | | Perno/Tuerca | |
|-------------------|---------------------|------------------------------------|----------------|--------------|----------------|--------------|----------------|-----------------|---------|
| | | | A mm / in | B mm / in | C mm / in | D mm / in | E mm / in | Nº Tamaño mm | |
| 40 1½ | 48.3 1.900 | 300 2.07 | 195 7.68 | 24 0.95 | 150 5.90 | 110 4.33 | 45.4 1.78 | 2- M10X50 | 4- M16 |
| 50 2 | 60.3 2.375 | 300 2.07 | 220 8.66 | 24 0.95 | 165 6.50 | 125 4.92 | 57.5 2.26 | 2- M10X50 | 4- M16 |
| 65 2½ | 73.0 2.875 | 300 2.07 | 235 9.25 | 24 0.95 | 182 7.16 | 145 5.71 | 69.8 2.74 | 2- M10X50 | 4- M16 |
| 65 76.1 | 76.1 3.000 | 300 2.07 | 235 9.25 | 24 0.95 | 185 7.28 | 145 5.71 | 72.7 2.86 | 2- M10X50 | 4- M16 |
| 80 3 | 88.9 3.500 | 300 2.07 | 252 9.92 | 24 0.95 | 200 7.87 | 160 6.30 | 85.5 3.37 | 2- M10X50 | 8- M16 |
| 100 108.0 | 108.0 4.250 | 300 2.07 | 280 11.02 | 25.5 1.00 | 220 8.66 | 180 7.09 | 104.5 4.11 | 2- M12X55 | 8- M16 |
| 100 4 | 114.3 4.500 | 300 2.07 | 280 11.02 | 25.5 1.00 | 229 9.00 | 180 7.09 | 110.5 4.35 | 2- M12X55 | 8- M16 |
| 125 139.7 | 139.7 5.500 | 300 2.07 | 320 12.60 | 25.5 1.00 | 254 10.00 | 210 8.27 | 135.5 5.33 | 2- M12X65 | 8- M16 |
| 150 165.1 | 165.1 6.500 | 300 2.07 | 346 13.62 | 25.5 1.00 | 280 11.00 | 240 9.45 | 160.8 6.33 | 2- M12X65 | 8- M20 |
| 165 6 | 168.3 6.625 | 300 2.07 | 346 13.62 | 25.5 1.00 | 280 11.00 | 240 9.45 | 164.3 6.47 | 2- M12X65 | 8- M20 |
| 200 8 | 219.1 8.625 | 300 2.07 | 414.3 16.31 | 30 1.18 | 341.4 13.44 | 295 11.61 | 214.9 8.46 | 2- 3/8X70 | 12- M20 |
| 250 10 | 273.0 10.750 | 300 2.07 | 481.2 18.94 | 30.3 1.19 | 405.6 15.97 | 355 13.98 | 268.9 10.59 | 2- 3/8X70 | 12- M24 |
| 300 12 | 323.9 12.750 | 300 2.07 | 530.5 20.88 | 30.3 1.19 | 460 18.11 | 410 16.14 | 318.9 12.56 | 2- 3/8X70 | 12- M24 |