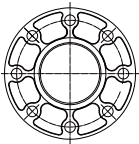
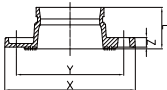


321GA ANSI 125/150

Adaptor Flange
Class 125/150



Nominal Size mm/in	Pipe O.D. mm/in	Working Pressure PSI/MPa	Dimensions				Bolt/Nut No.-SIZE mm	Certificate
			L mm/in	X mm/in	Y mm/in	Z mm/in		
50 2	60.3 2.375	300 2.07	65 2.559	152 6.0	120.5 4.74	16 0.63	4-5/8	UL FM
65 2½	73.0 2.875	300 2.07	65 2.559	185 7.28	139.7 5.50	16 0.63	4-5/8	UL FM
80 3	88.9 3.500	300 2.07	65 2.559	200 7.87	152.4 6.00	16 0.63	8-5/8	UL FM
100 4	114.3 4.500	300 2.07	70 2.756	229 9.01	190.5 7.50	16 0.63	8-5/8	UL FM
150 6	168.3 6.625	300 2.07	70 2.756	282 11.10	241.3 9.50	18 0.71	8-3/4	UL FM
200 8	219.1 8.625	300 2.07	75 2.953	340 13.39	298.5 11.75	19 0.75	8-3/4	UL FM
250 10	273.0 10.75	300 2.07	85 3.35	406 15.98	362 14.25	21 0.826	12-7/8	UL FM
350 14	355.6 12.750	300 2.0	127 5.00	535 21.00	476.3 18.75	37 1.44	12-1	—
400 16	406.4 16.000	300 2.0	127 5.00	595 23.50	539.8 21.25	37 1.44	16-1	—
450 18	457.2 18.000	300 2.0	140 5.50	642 25.28	577.8 22.75	40 1.56	16-11/8	—
500 20	508.0 20.000	300 2.0	152 6.00	700 27.50	635 25.00	43 1.69	20-11/8	—
600 24	609.6 24.000	300 2.0	152 6.00	815 32.00	749.3 29.50	49 1.94	20-11/4	—