

AMERICAN STANDARD CLASS 300 MALLEABLE IRON PIPE FITTING -90° ELBOW HOT-DIP GALVANIZING

Type: 90

Doc No: DS-194-90-01-E

1.0 PRODUCT OVERVIEW

The class 300 90° elbow is one kind of malleable iron pipe fittings with NPT thread, which can connect two pipe joints of the same nominal diameter to make the pipe can be turned 90 degree.



Dimensions:

1/4" (DN8)-4" (DN100)

Design Standard:

ASME B16.3

Connection Standard:

ANSI/ASME B 1.20.1

Working Pressure:

300PSI

Application:

The malleable iron fittings 90° elbow is mainly applied to medium and low pressure pipeline systems for water supply and drainage, fire protection, air conditioning, etc. with a nominal pressure of 500 PSI. The operating temperature range is -29 °C-120 °C.

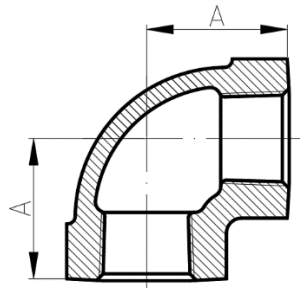
Pipe Material:

Welded and seamlessly rolled steel pipe:
ASME B36.10, ASTM A53-A53M

Surface Treatment:

- Black
- Hot-dip galvanizing
- Electric zinc plating
- Electric zinc plating base on hot dipped galvanizing
- Others would be available upon clients' detailed request

2.0 DIMENSIONS AND PERFORMANCE



Size	Inch	1/4	3/8	1/2	3/4	1	1 1/4
	mm	8	10	15	20	25	32
6Dim (mm)	A	24	27	32	37	41.5	49.5
Size	Inch	1 1/2	2	2 1/2	3	4	
	mm	40	50	65	80	100	
Dim (mm)	A	54.5	63.5	75	86	114	

3.0 REFERENCE MATERIALS

None