

AMERICAN STANDARD MALLEABLE IRON PIPE FITTING-TEE HOT-DIP GALVANIZING

Type: 130

Doc No: DS-194-130-01-E

1.0 PRODUCT OVERVIEW

Tee is used for pipe connections for connection at the bend of the pipe and changing the direction of the pipe.



Dimensions:

1/4" (DN8)-4" (DN100)

Design Standard:

ASME B16.3

Connection Standard:

ANSI/ASME B 1.20.1

Working Pressure:

300PSI

Application:

The malleable iron fittings are applied to medium and low pressure pipeline systems for water supply and drainage, fire protection, air conditioning, etc. with a nominal pressure of 300PSI. The operating temperature range is -29 °C-120 °C.

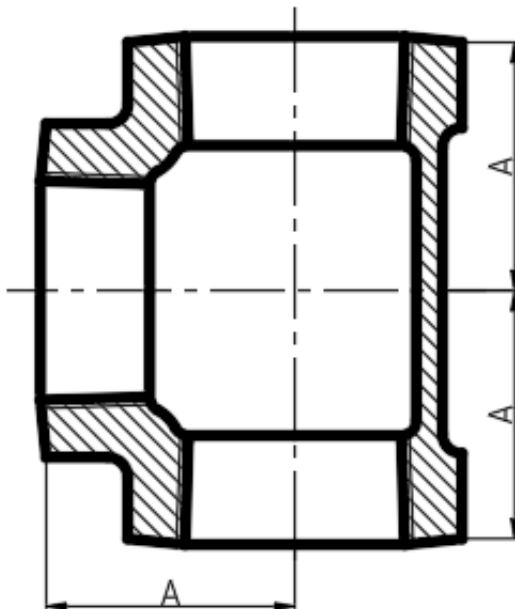
Pipe Material:

Welded and seamlessly rolled steel pipe:
ASME B36.10、ASTM A53-A53M

Surface Treatment:

- ☐ Black
- ☐ Hot-dip galvanizing

2.0 DIMENSIONS AND PERFORMANCE



Size	Inch	1/4	3/8	1/2	3/4	1	1 1/4
	mm	8	10	15	20	25	32
Dim (mm)	A	24	27	32	37	41.5	49.5
Size	Inch	1 1/2	2	2 1/2	3	4	
	mm	40	50	65	80	100	
Dim (mm)	A	54.5	63.5	75	86	114	

3.0 REFERENCE MATERIALS

Approved certification for American Standard Malleable Iron Pipe Fittings