

## AMERICAN STANDARD MALLEABLE IRON PIPE FITTING-UNION WITH BRASS SEAT HOT-DIP GALVANIZING

**Type: 342**

**Doc No: DS-194-342-01-E**

### 1.0 PRODUCT OVERVIEW

Union with brass seat is a kind of pipe fitting with NPT thread, which connects two pipes with the same nominal diameter and makes the pipeline parallel and easy to install and disassemble.



#### **Dimensions:**

1/8"(DN6)-4"(DN100)

#### **Design Standard:**

ASME B16.3

#### **Connection Standard:**

ANSI/ASME B 1.20.1

#### **Working Pressure:**

300PSI

#### **Application:**

The malleable iron fitting- Union with brass seat is mainly applied to medium and low pressure pipeline systems for water supply and drainage, fire protection, air conditioning, etc. with a nominal pressure of 300 PSI. The operating temperature range is -29 °C-120 ° C.

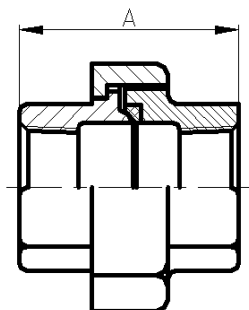
## Pipe Material:

Welded and seamlessly rolled steel pipe:  
ASME B36.10, ASTM A53-A53M

## Surface Treatment:

- ☐ Black
- ☐ Hot-dip galvanizing

## 2.0 DIMENSIONS AND PERFORMANCE



Size	Inch	1/8	1/4	3/8	1/2	3/4	1
	mm	6	8	10	15	20	25
6Dim (mm)	A	32	39.5	43.5	46	54	59
Size	Inch	1 1/4	1 1/2	2	2 1/2	3	4
	mm	32	40	50	65	80	100
6Dim (mm)	A	68	72.5	82	85	104	113.5

## 3.0 REFERENCE MATERIALS

Approved certification for American Standard Malleable Iron Pipe Fittings