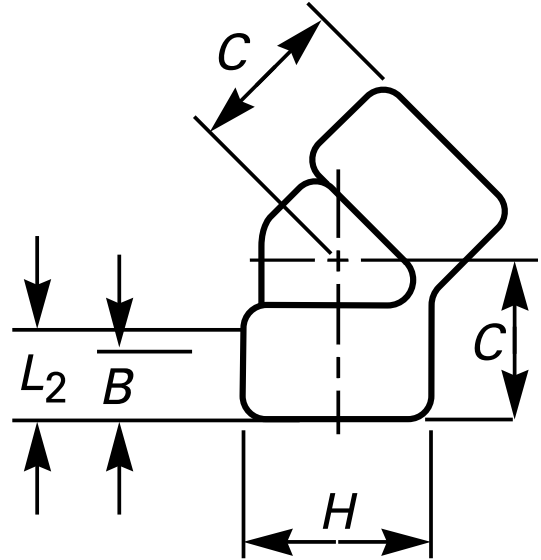




\* Reference photo



Units: Millimeters (mm)

**Design:** ANSI B16.11  
**Threaded:** NPT ANSI B1.20.1  
**Material:** Forged Steel ASTM A105  
**Class:** 3000  
**Correlation:**  
 Schedule 160 / Wall Designation XXS

Nominal Pipe Size		Center-to-End, C	Outside Diameter of Band, H	Min. Wall Thickness	Min. Length of Thread		Approx. Weight
inch	mm				B	L2	
1/8"	6	17	22	3.18	6.4	6.7	0.09
1/4"	8	19	25	3.30	8.1	10.2	0.09
3/8"	10	22	33	3.51	9.1	10.4	0.23
1/2"	15	25	38	4.09	10.9	13.6	0.32
3/4"	20	28	46	4.32	12.7	13.9	0.54
1"	25	33	56	4.98	14.7	17.3	0.91
1 1/4"	32	35	62	5.28	17.0	18.0	1.00
1 1/2"	40	43	75	5.56	17.8	18.4	2.04
2"	50	44	84	7.14	19.0	19.2	2.22
2 1/2"	65	52	102	7.65	23.6	28.9	3.67
3"	80	64	121	8.84	25.9	30.5	5.94
4"	100	79	152	11.18	27.7	33.0	11.22

\* Note : Dimensions, design and materials are subject to change without notice.

MAC EDITIONS - MMXXIV

