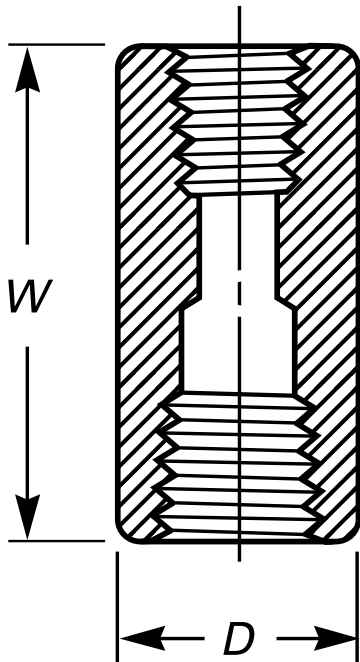




* Reference photo

Design: ANSI B16.11
Threaded: NPT ANSI B1.20.1
Material: Forged Steel ASTM A105
Class: 3000
Correlation: Schedule 160



Nominal Pipe Size in	Outside Diameter, D	End to End, W	Approx. Weight kg
1/4 x 1/8	19.05	35.05	0.05
3/8 x 1/8	22.35	38.10	0.05
3/8 x 1/4	22.35	38.10	0.05
1/2 x 1/8	28.45	47.75	0.09
1/2 x 1/4	28.45	47.75	0.18
1/2 x 3/8	28.45	47.75	0.09
3/4 x 1/8	33.78	50.80	0.18
3/4 x 1/4	33.78	50.80	0.18
3/4 x 3/8	33.78	50.80	0.18
3/4 x 1/2	33.78	50.80	0.18
1 x 1/8	44.45	60.45	0.36
1 x 1/4	44.45	60.45	0.36
1 x 3/8	44.45	60.45	0.36
1 x 1/2	44.45	60.45	0.36
1 x 3/4	44.45	60.45	0.36
1-1/4 x 1/8	57.15	66.55	0.68
1-1/4 x 1/4	57.15	66.55	0.68
1-1/4 x 3/8	57.15	66.55	0.68
1-1/4 x 1/2	57.15	66.55	0.68
1-1/4 x 3/4	57.15	66.55	0.68
1-1/4 x 1	57.15	66.55	0.68
1-1/2 x 1/8	63.50	79.25	0.95
1-1/2 x 1/4	63.50	79.25	0.95
1-1/2 x 3/8	63.50	79.25	0.95
1-1/2 x 1/2	63.50	79.25	0.95
1-1/2 x 3/4	63.50	79.25	0.95
1-1/2 x 1	63.50	79.25	1.27
1-1/2 x 1-1/4	63.50	79.25	0.95
2 x 1/8	76.20	85.85	1.36
2 x 1/4	76.20	85.85	1.36
2 x 3/8	76.20	85.85	1.36
2 x 1/2	76.20	85.85	1.36
2 x 3/4	76.20	85.85	1.36
2 x 1	76.20	85.85	2.04
2 x 1-1/4	76.20	85.85	1.50
2 x 1-1/2	76.20	85.85	1.77
2-1/2 x 1/2	91.95	91.95	2.59
2-1/2 x 3/4	91.95	91.95	2.04
2-1/2 x 1	91.95	91.95	2.04
2-1/2 x 1-1/4	91.95	91.95	2.04
2-1/2 x 1-1/2	91.95	91.95	2.04
2-1/2 x 2	91.95	91.95	2.04
3 x 3/4	107.95	107.95	3.04
3 x 1	107.95	107.95	3.04
3 x 1-1/4	107.95	107.95	3.04
3 x 1-1/2	107.95	107.95	3.04
3 x 2	107.95	107.95	3.04
3 x 2-1/2	107.95	107.95	3.04
4 x 1-1/2	139.70	120.65	5.40
4 x 2	139.70	120.65	5.40
4 x 2-1/2	139.70	120.65	5.40
4 x 3	139.70	120.65	5.40

Units: Millimeters (mm)

* Note : Dimensions, design and materials are subject to change without notice.

