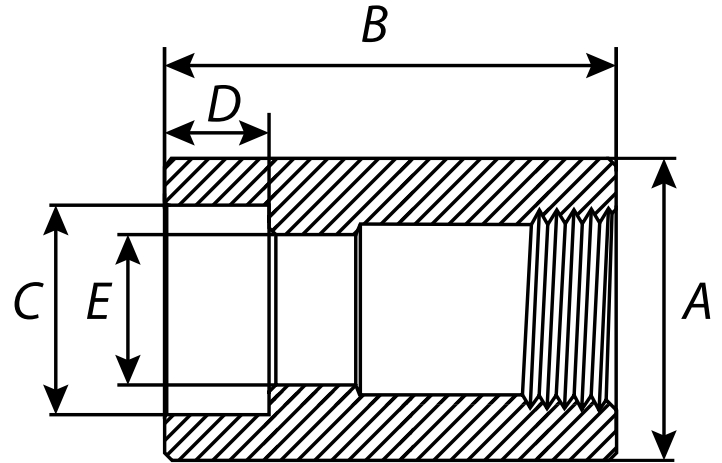




* Reference photo



Design: ANSI B16.11
Threaded: NPT ANSI B1.20.1
Socket Welding
Material: Forged Steel ASTM A105
Class: 3000
Correlation: SCH 160 NPT / 80 SW

Units: Millimeters (mm)

Nominal Pipe Size		Outside Diameter, A	End-to-End, B	Socket Bore Diameter, C	Min. Depth of Socket, D	Bore Diameter of Fittings, E	Approx. Weight
inch	mm						kg
1/4"	8	22.23	34.93	14.22	11.13	9.25	0.06
3/8"	10	27.00	38.10	17.60	11.13	12.52	0.05
1/2"	15	31.75	47.63	21.82	11.13	15.80	0.06
3/4"	20	38.10	50.80	27.20	13.49	20.93	0.13
1"	25	46.05	60.33	33.91	13.49	26.64	0.19
1 1/4"	32	57.15	66.68	42.72	13.49	35.05	0.39
1 1/2"	40	63.50	79.38	48.82	13.49	40.89	0.73
2"	50	76.20	85.73	61.21	16.66	52.50	1.02
2 1/2"	65	92.08	92.08	73.91	16.66	62.71	1.34
3"	80	109.55	107.95	89.81	16.66	77.93	2.09
3 1/2"	92	127.00	114.30	102.51	19.84	90.12	3.12
4"	100	139.70	120.65	115.44	19.84	102.26	5.66

* Note : Dimensions, design and materials are subject to change without notice.

MAC EDITIONS - MMXXIV

