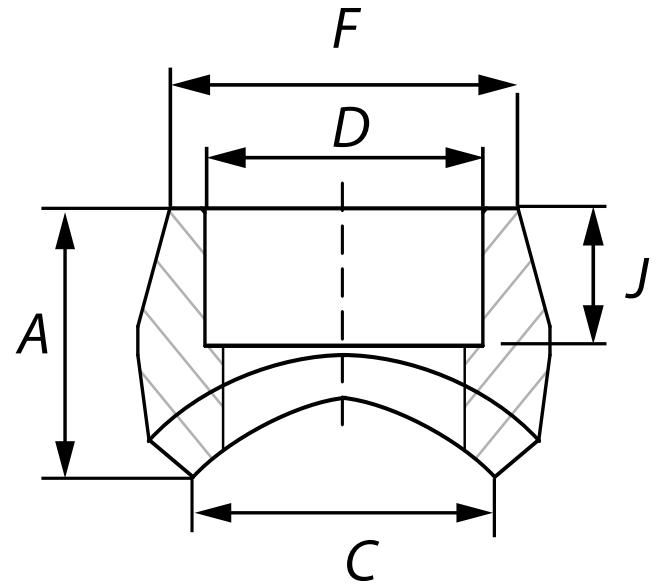




\* Reference photo



**Design:** MSS-SP-97-2001  
**Socket Weld**  
**Material:** Forged Steel ASTM A105  
**Class:** 3000  
**Correlation:**  
 Schedule 160

**Units:** Millimeters (mm)

| Size   |     | A     | C      | D     | F     | J<br>(Min.) | Approx. Weight |
|--------|-----|-------|--------|-------|-------|-------------|----------------|
| inch   | mm  |       |        |       |       |             | kg             |
| 1/8"   | 6   | 19.0  | 13.7   | 10.9  | 17.3  | 10.0        | 0.05           |
| 1/4"   | 8   | 19.0  | 13.7   | 14.4  | 22.0  | 10.0        | 0.05           |
| 3/8"   | 10  | 21.0  | 17.1   | 17.8  | 25.8  | 10.0        | 0.09           |
| 1/2"   | 15  | 25.0  | 21.3   | 22.0  | 31.3  | 10.0        | 0.14           |
| 3/4"   | 20  | 27.0  | 26.7   | 27.3  | 37.1  | 13.0        | 0.16           |
| 1"     | 25  | 33.0  | 33.4   | 34.1  | 45.5  | 13.0        | 0.27           |
| 1 1/4" | 32  | 33.0  | 42.2   | 42.8  | 54.9  | 13.0        | 0.39           |
| 1 1/2" | 40  | 35.0  | 48.3   | 48.9  | 61.6  | 13.0        | 0.45           |
| 2"     | 50  | 38.0  | 60.3   | 61.4  | 75.3  | 16.0        | 0.73           |
| 2 1/2" | 65  | 46.0  | 73.0   | 74.2  | 91.7  | 16.0        | 1.25           |
| 3"     | 75  | 51.0  | 88.9   | 90.1  | 109.1 | 16.0        | 1.72           |
| 3 1/2" | 88  | 54.0  | 101.6  | -     | -     | -           | 1.95           |
| 4"     | 100 | 57.0  | 114.3  | 115.8 | 137.2 | 19.0        | 3.29           |
| 5"     | 125 | 66.7  | 141.29 | -     | -     | -           | 5.44           |
| 6"     | 150 | 69.85 | 169.86 | -     | -     | -           | 6.58           |

\* Note : Dimensions, design and materials are subject to change without notice.

MAC EDITIONS - MMXXIV

