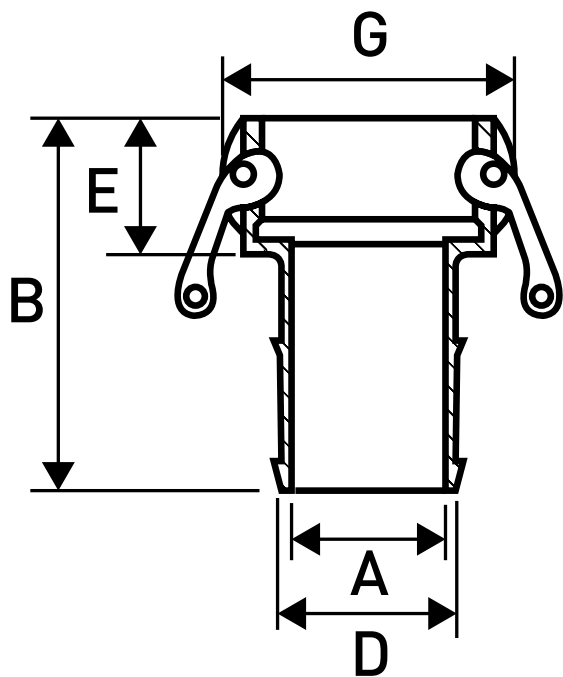


Design Norm: Federal Mil A-A-59326A  
 Material: Stainless Steel 316  
 Working Pressure:  
 1/2" 150 PSI, 3/4" - 2" 250 PSI, 2 1/2" 225 PSI, 3" 200 PSI, 4"-6" 100 PSI



MAC EDITIONS - MMXXIII

Size		A (mm)	B (mm)	C (mm)	D (mm)	E (mm)	G (mm)	Weight (kg)
inch	mm							
1/2"	13	10	73	15	31	39	0.15	0.12
3/4"	19	13	87	21	35	54	0.25	0.15
1"	25	19	97	27	40	60	0.39	0.24
1 1/4"	32	26	104	33	46	79	0.62	0.43
1 1/2"	40	32	109	41	47	86	0.76	0.50
2"	50	43	125	53	53	97	1.06	0.61
2 1/2"	65	56	136	68	56	105	1.38	0.80
3"	75	66	160	76	58	121	2.13	1.15
4"	100	90	170	103	62	148	2.99	1.60
5"	125	106	187	130	65	175	4.63	2.69
6"	150	144	256	155	66	220	7.24	3.00

\* Note : Dimensions, design and materials are subject to change without notice.