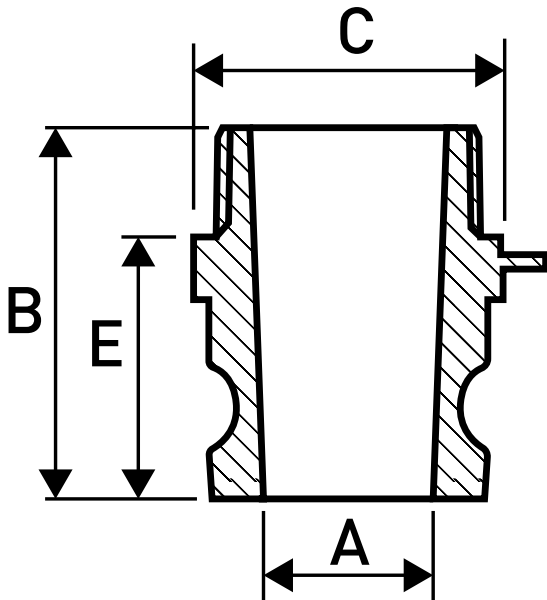


Design Norm: Federal Mil A-A-59326A
 Threaded: NPT ANSI B1.20.1
 Material: Stainless Steel 316
 Working Pressure:
 1/2" 150 PSI, 3/4" - 2" 250 PSI, 2 1/2"
 225 PSI, 3" 200 PSI, 4"-6" 100 PSI



Size		A (mm)	B (mm)	C (mm)	E (mm)	Weight (kg)
inch	mm					
1/2"	13	13	56	26	37	0.07
3/4"	19	21	59	35	41	0.12
1"	25	25	68	38	45	0.17
1 1/4"	32	28	78	47	54	0.25
1 1/2"	40	36	81	56	58	0.36
2"	50	45	87	68	62	0.45
2 1/2"	65	55	101	79	69	0.71
3"	75	72	103	101	71	0.96
4"	100	96	118	126	79	1.57
5"	125	124	127	150	82	4.03
6"	150	151	121	181	78	4.71

* Note : Dimensions, design and materials are subject to change without notice.