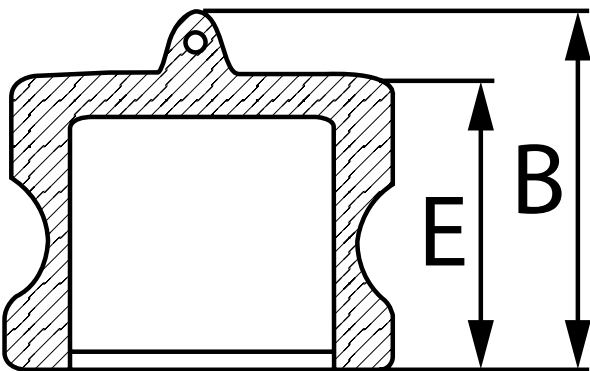


Design Norm: Federal Mil A-A-59326A
 Material: Stainless Steel 316
 Working Pressure:
 1/2" 150 PSI, 3/4" - 2" 250 PSI, 2 1/2"
 225 PSI, 3" 200 PSI, 4"-6" 100 PSI



Size		B (mm)	E (mm)	Weight (kg)
inch	mm			
1/2"	13	36	27	0.04
3/4"	19	38	25	0.07
1"	25	46	34	0.10
1 1/4"	32	53	41	0.19
1 1/2"	40	55	41	0.23
2"	50	63	49	0.33
2 1/2"	65	68	53	0.50
3"	75	66	52	1.01
4"	100	70	54	1.80
5"	125	75	53	2.69
6"	150	88	90	3.79



MAC EDITIONS - MMXXIII

* Note : Dimensions, design and materials are subject to change without notice.