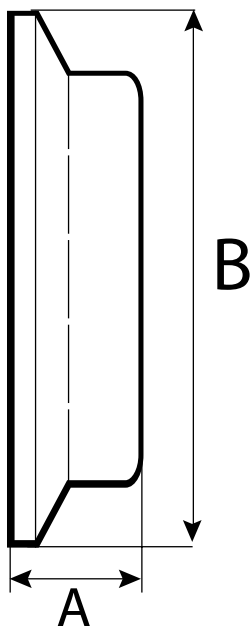




### FEATURES DESIGN

Material SS 304 or 316L  
 Polish 320G (I&O)  
 SMS  
 ASTM A270  
 Grade Sanitary



### DIMENSIONS

SIZE	A		B		Weight
	inch	mm	inch	mm	Kg
1/2	0.500	12.700	0.370	9.398	0.02
3/4	0.500	12.700	0.620	15.748	0.01
1	0.500	12.700	0.870	22.098	0.07
1 1/4	0.500	12.700	1.120	28.448	0.06
1 1/2	0.500	12.700	1.370	34.798	0.04
2	0.500	12.700	1.870	47.498	0.06
2 1/2	0.500	12.700	2.370	60.198	0.08
3	0.500	12.700	2.870	72.898	0.10
4	0.625	15.875	3.834	97.384	0.18
5	0.750	19.050	4.780	121.412	0.26
6	0.875	22.225	5.780	146.812	0.42
8	0.937	23.800	7.782	197.663	0.55
10	0.937	23.800	9.732	247.193	0.78
12	0.937	23.800	11.732	297.993	0.94