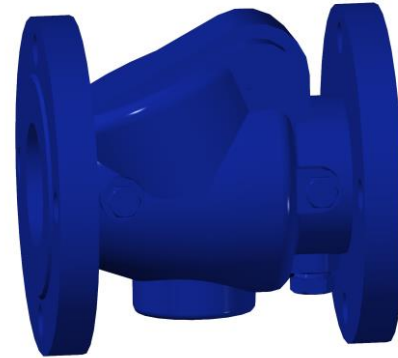


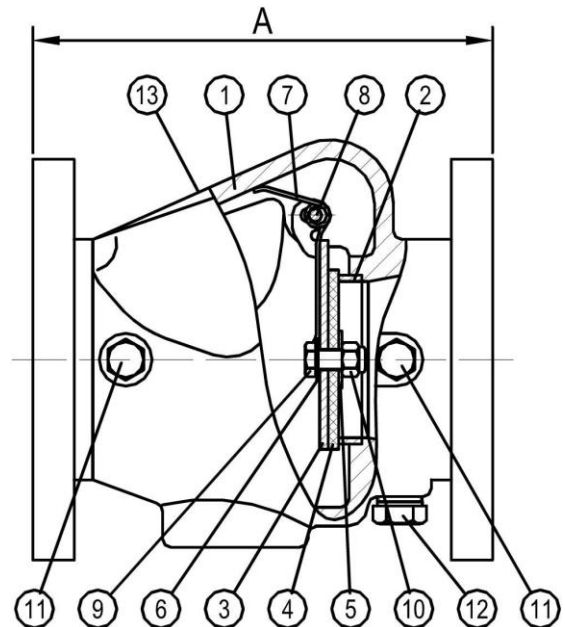
350PSI VCF01 Flanged-End Swing Check Valve

- Installed in both Horizontal or Vertical Line with Upward Flow
- Easier and Faster to Maintain and Install
- Low Pressure Drop
- EPDM non-stick leak tight sealing
- All Stainless Steel Wetted Parts to Provide Superior Corrosion Resistance
- FM Pending & UL/ULC Listed



Material Specifications

PART	SPECIFICATION
1. Body	Ductile Iron ASTM A 536
2. Seat	Bronze
3. Clapper	Stainless Steel 304
4. Facing Seal	EPDM Rubber
5. Clamping Ring	Stainless Steel 304
6. Gasket	EPDM Rubber
7. Spring	Stainless Steel 304
8. Hinge Pin	Stainless Steel 304
9. Bolt	Stainless Steel 304
10. Locknut	Stainless Steel 304
11. Plug 1/4" NPT	Carbon Steel
12. Plug 1/2" NPT	Carbon Steel



Dimension

Part Number	size		A		Weight	
	In.	mm	In.	mm	lbs	kg
VCF01-050	2	DN50	6.65	169	5.5	2.5
VCF01-065	2½	DN65	7.20	183	8.8	4
VCF01-080	3	DN80	7.80	198	13	6
VCF01-100	4	DN100	8.58	218	20	9
VCF01-125	5	DN125	9.76	248	33	15
VCF01-150	6	DN150	10.63	270	42	19
VCF01-200	8	DN200	12.80	325	77	35
VCF01-250	10	DN250				
VCF01-300	12	DN300				

Flange Standard: ASME 16.5 Class 150

BS 4504 PN10 / PN16

AS 2129 Table D / Table E

