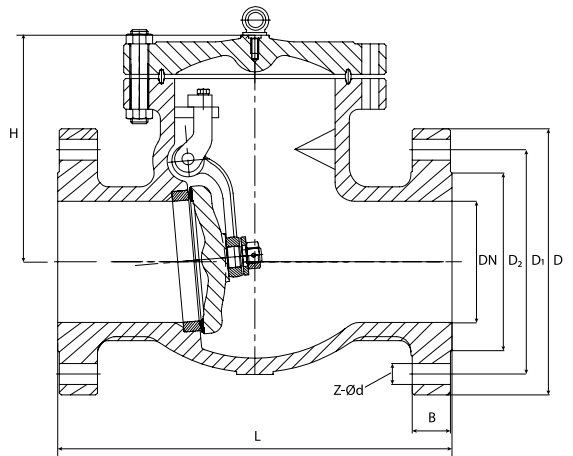




* Reference photo

Body and Bonnet Cast Steel
 ASTM A216 WCB
 Bolted Bonnet
 Norm Steel Valves: ANSI/ASME B16.34
 Flange dimensions: ANSI B16.5 RF
 Face to Face dimensions: ASME B16.10
 Hydrostatic Testing API 598



Fiorella Representaciones S.A.C.
 Importador y distribuidor autorizado de
 válvulas REX para Perú y para su exportación.

MATERIALS

	PART NAME	MATERIAL
1	BODY	ASTM A216 WCB
2	CAP	ASTM A216 WCB
3	SEAT RING	ASTM A216 WCB + 13% Cr
4	DISK	ASTM A216 WCB + 13% Cr
5	HINGE	WCB
6	PINS, HINGE	410 SS
7	DISK WASHER	STEEL
8	CAP SCREW	A307 Gr. B
9	CAP GASKET	RING TYPE JOINT
10	CAP STUDS	A193 Gr. B7
11	CAP NUTS	A194 Gr. 2H
12	I.D. TAGS	SS
13	I.D. PINS	STEEL

PRESSURE TEMPERATURE RATINGS (PSI)

Temperature °F/°C	Class 600
(-) 20 °F / (-) 29 °C to (+) 100 °F / (+) 38 °C	1480
200 °F / 93 °C	1350
300 °F / 149 °C	1315
400 °F / 204 °C	1270
500 °F / 260 °C	1200
600 °F / 316 °C	1095
650 °F / 343 °C	1075
700 °F / 371 °C	1065
750 °F / 399 °C	1010
800 °F / 427 °C	825
850 °F / 454 °C	535
900 °F / 482 °C	345

DIMENSIONS (mm)

SIZE	L	D	D1	D2	B	Z-Ød	H	WEIGHT (Kg)
2"	292	165	127	92	26	8-19	200	33
2 1/2"	330	190	149	105	29	8-22	236	46
3"	356	210	168	127	32	8-22	269	56
4"	432	273	216	157	38	8-25	310	102
6"	559	356	292	216	48	12-29	407	208
8"	660	419	349	270	56	12-32	472	357
10"	787	508	432	324	64	16-35	546	476
12"	838	559	489	381	67	20-35	584	771

* Note : Dimensions, design and materials are subject to change without notice. Approximate weights.

MAC EDITIONS - MMXXIII

